



Smart Business



# INDEX

ABOUT US

WHAT DO WE DO

OUR STRENGTHS - OUR PRIMARY PRINCIPALS

OUR ACTIVITY FIELDS

PRE-FABRICATED BUILDINGS

TENT

CONTACT

# ABOUT US

**SMART KEY LLC**, started operating in 1996, with more than 25 years' experience is one of the successful worldwide international trade company that offers a wide range of solutions to its clients.

**SMART KEY TURKEY**, Based in Istanbul-Turkey, was established in 2016.

With our high level of experience that we have obtained from our foreign trade operations, we have been providing foreign trade consultancy to the companies that need commercial consultancy in import and export.

If you want to export your products and services to foreign markets or import products to the domestic market, you can benefit from our expertise.

Our main aim is to provide our customers a smooth and successful solutions.



# WHAT DO WE DO?

- International Trading Services (ITS)
- Global Business Development (GBD)
- International Sourcing Management (ISM)
- International Business Consultancy (IBC)
- Global Marketing Services (GMS)
- Global Agency Services (GAS)



## OUR STRENGTHS

- 25 years of experience
- Respecting the **“Win–Win”** principle
- Being always in search of excellence
- Believing in universal values
- Believing in service to humanity
- Working with a young, dynamic and talented team
- Being goal & solution oriented
- Believing in customer satisfaction

## OUR PRIMARY PRINCIPLES

- Taking care of rendering its customers always services of higher quality
- Protecting our customers' benefit
- Ensuring efficient and reliable team-work
- Adopting transparent and law-abiding working principles



# OUR ACTIVITY FIELDS

## PRE - FABRICATED BUILDINGS



MODULAR LIVING SPACES



LIGHT GAUGE SOLUTIONS

## TENTS



# PRE-FABRICATED BUILDINGS



# PRE-FABRICATED BUILDINGS

---

We provide flexible and modular buildings suitable for different usage areas such as industrial, commercial, residential and social to support the disaster accommodation capacity and to respond to the increasing demand in the pre-fabricated building sector.

We are focused to develop and manufacture affordable, qualified and innovative accommodation systems to provide safer and happier living conditions.



# OUR SOLUTIONS

---

Our solutions are pre-fabricated living space solutions that can be produced and applied in a short time, which ensure quick accommodation solutions.

These can be regarded as the most suitable solutions for various corporate or public needs such as construction site, social facility, hospital, school, office, dining hall, dormitory and disaster accommodation.

These structures can be disassembled and re-installed; they can be adapted according to different geographical and climatic conditions by applying different insulation features.

More and more customers are choosing pre-fabricated living spaces due to their practical features, affordable costs and quick solutions.

We try to bring an innovative perspective to the prefabricated industry and we make differences by our environmentally friendly, sustainable, economical and practical solutions.

# OUR SOLUTIONS



## MODULAR LIVING SPACES



## LIGHT GAUGE SOLUTIONS

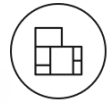


### OUTSTANDING FEATURES

- ✓ Advanced technicality solutions - impermeability, heat abduction blocking etc.
- ✓ Optimum product transportation advantage
- ✓ Thanks to modular characteristic, easy expansion, contraction and re-design opportunity.

- ✓ Thematic or concept housing or project solutions
- ✓ Facade and roof solutions suitable for different geographical/cultural regions
- ✓ Long service life and ability to assemble & disassemble many times
- ✓ Compatibility with environment friendly green building technologies

# OUR SOLUTIONS



## MODULAR LIVING SPACES



## LIGHT GAUGE SOLUTIONS

### FIELDS OF APPLICATION

- Blue-collar Camps
- Refugee Camps
- Temporary Disaster Settlements
- Mass Housing Projects
- Hospital Projects
- School Projects
- Showroom/Office Projects
- Blood donation Centers
- Play Houses
- WC and Shower Modules

- Mass Housing Projects
- Refugee Camps
- Temporary Disaster Settlements
- Individual Houses
- Blue-collar Camps
- Hospitals and Schools
- Places of worship
- Hangars
- Showrom/Office Projects
- Ballistic Units
- Plug-in bathroom modules



**TINY HOUSE**

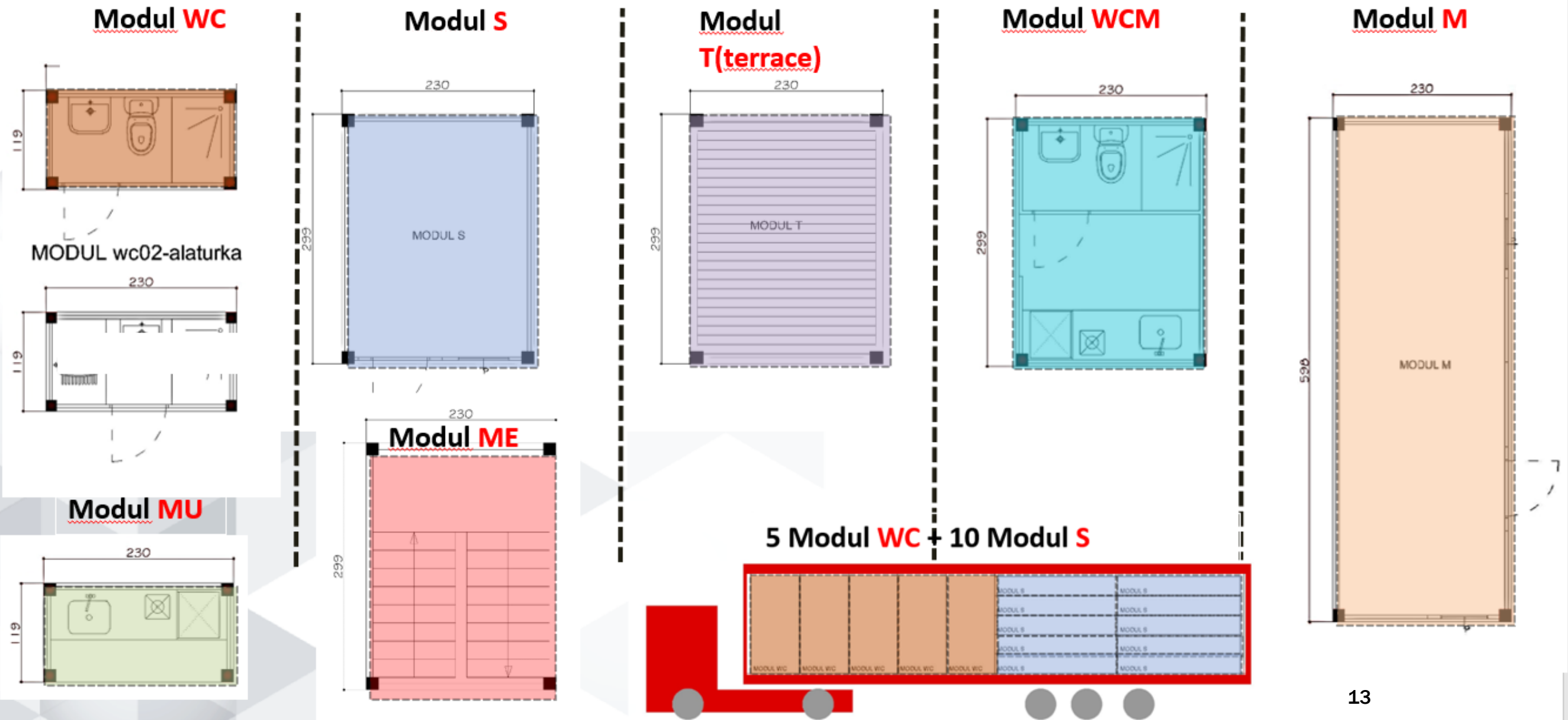


**ECO-VILLAGE**

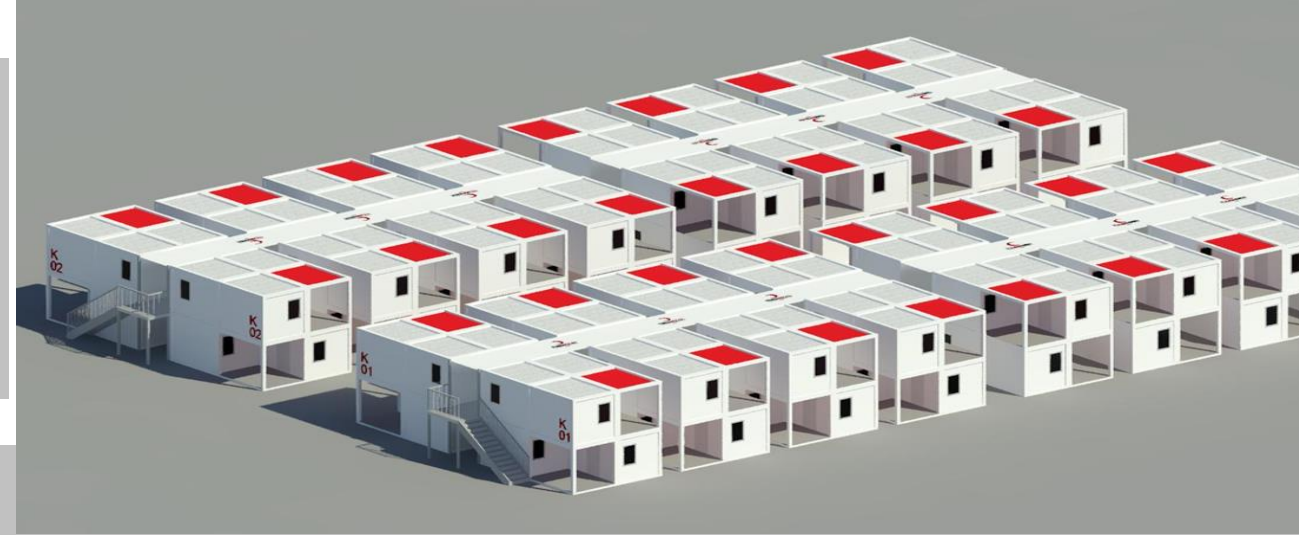
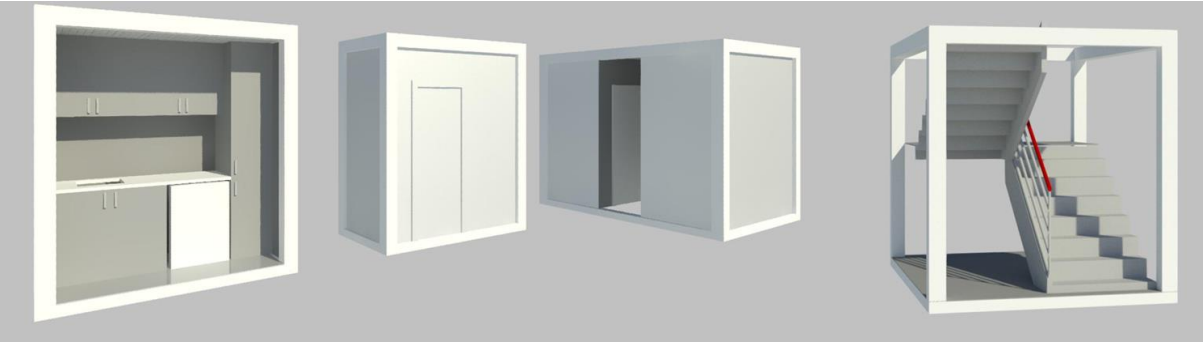
# STANDARD CONTAINER



# TYOLOGY OF MODULAR/CELLULAR UNITS

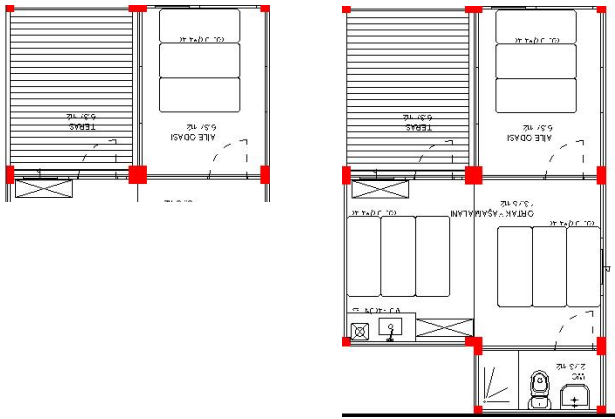
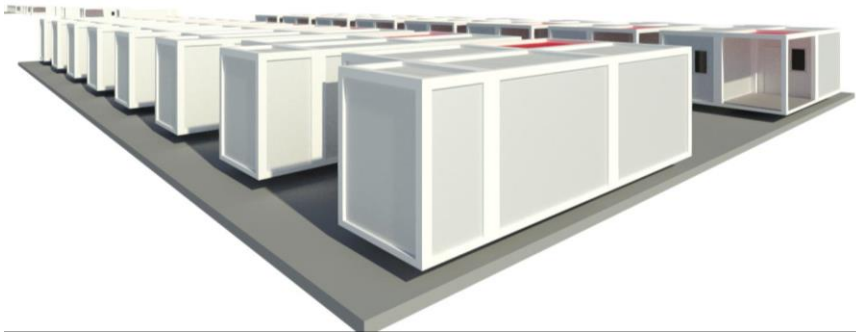


# INTEGRATION OF CELLULAR MODULES



# SAMPLE LAYOUT OF A DISTRICT

4380



# REFUGEE CAMPS



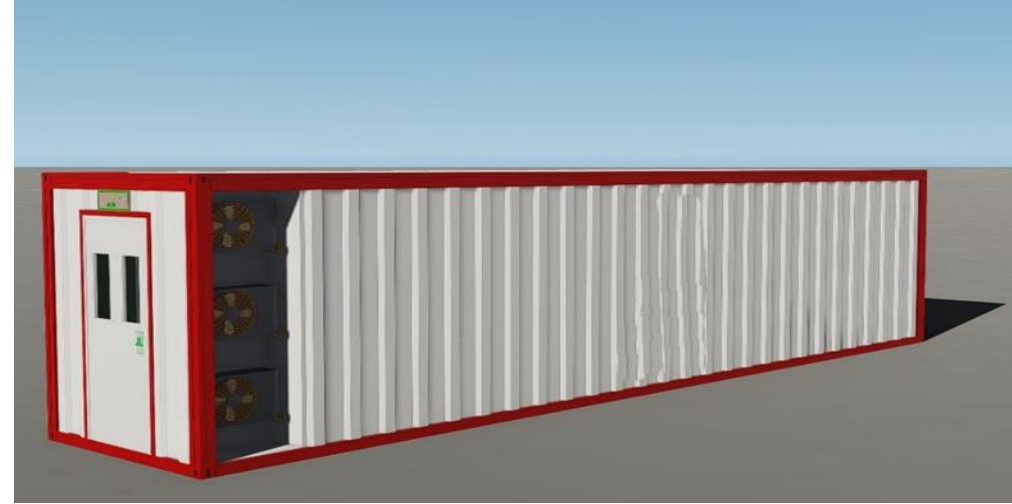
# COMBINED MODULAR UNITS



# CONSTRUCTION SITE BUILDINGS



# PORTABLE MOBILE UNITS



# PORTABLE MOBILE EMERGENCY INTERVENTION AREAS



# HOSPITAL CAMPUSES - MODULAR QUARANTINE HOSPITALS



(Designed according to World Health Organization pandemic hospitals standards)



# PLAY HOUSES

- Special design, no corners
- Special materials with related health standards



# PREFABRICATED BUILDINGS



# LIGHT GAUGE STEEL BUILDINGS



# SPECIAL DESIGNED UNITS



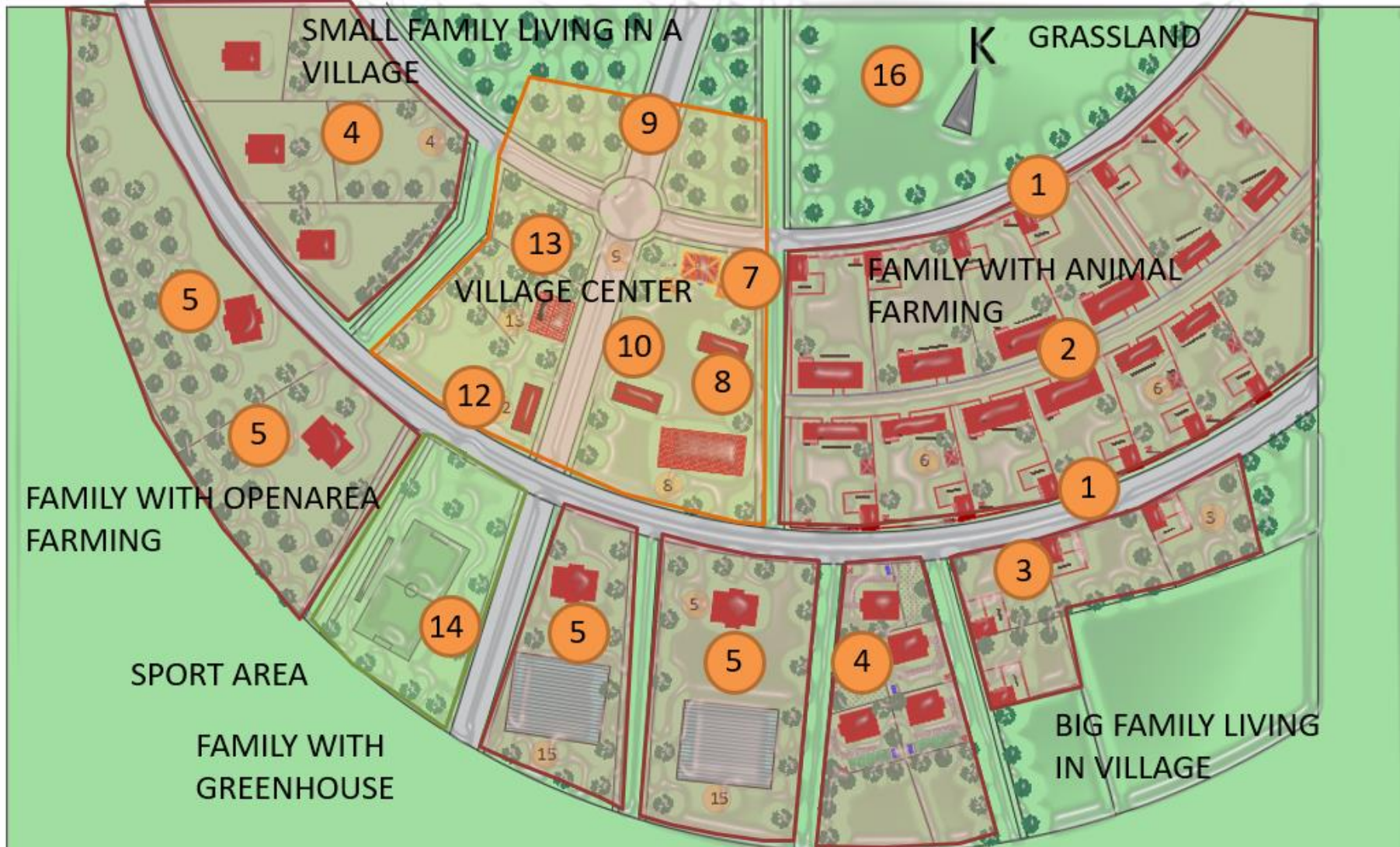
# SPECIAL DESIGNED MODULAR UNITS



# SPECIAL DESIGNED BUILDINGS

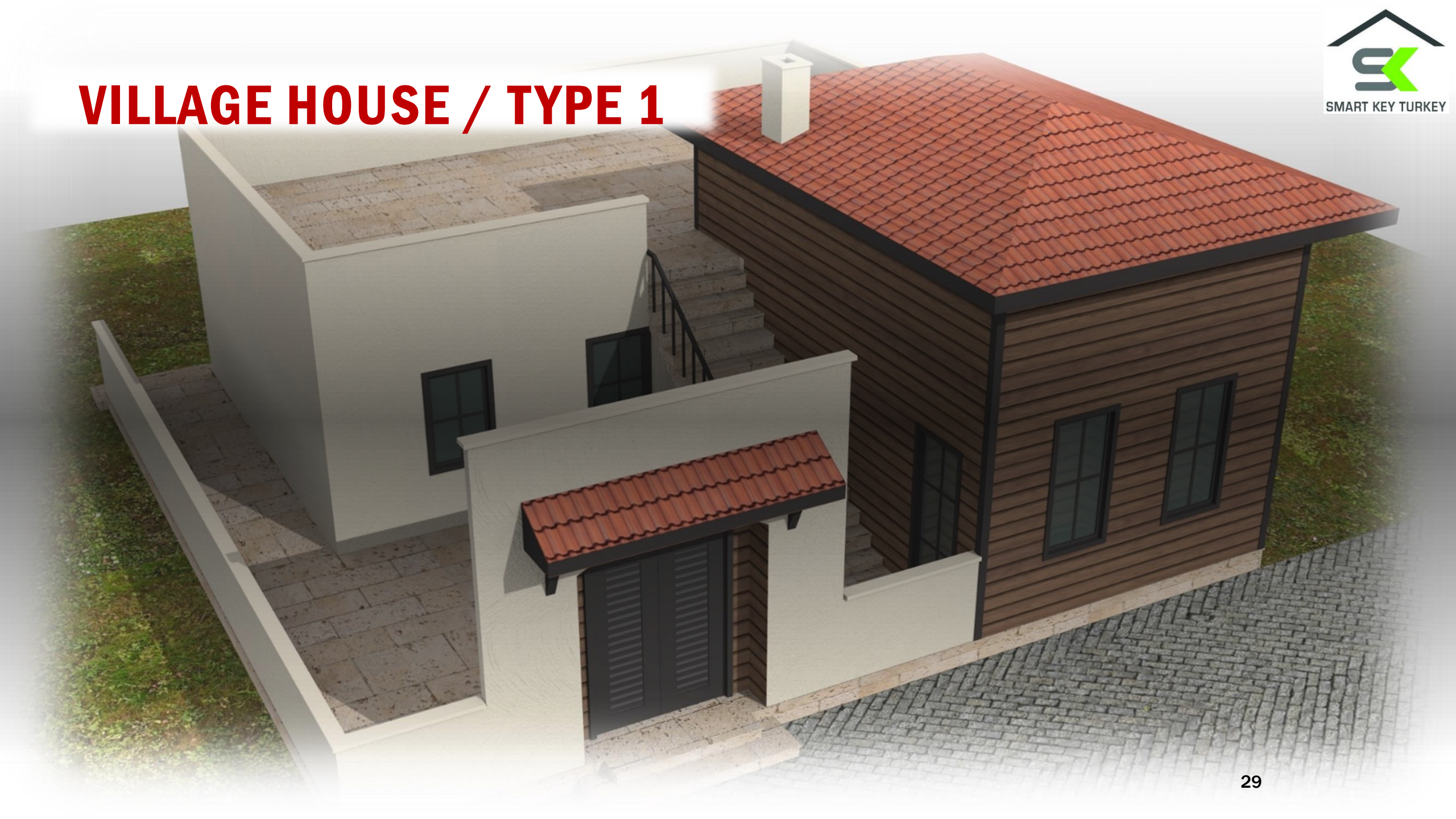


# CONCEPT PROJECTS - ECOVILLAGE



1. 1 deck Village House
2. Barn
3. 2 deck Village House
4. Private Small House (80m2)
5. 2 deck Big House
6. Dairy
7. Mosque
8. School
9. Village Center
10. Lodging
11. Village Mansion
12. Mukhtar Building
13. Health Building
14. Sport Area
15. Greenhouse
16. Grassland

# VILLAGE HOUSE / TYPE 1



# VILLAGE HOUSE / TYPE 2



# VILLAGE HOUSE / TYPE 2

**Type 2** / Two deck with courtyard



↑  
KONUT GİRİŞ

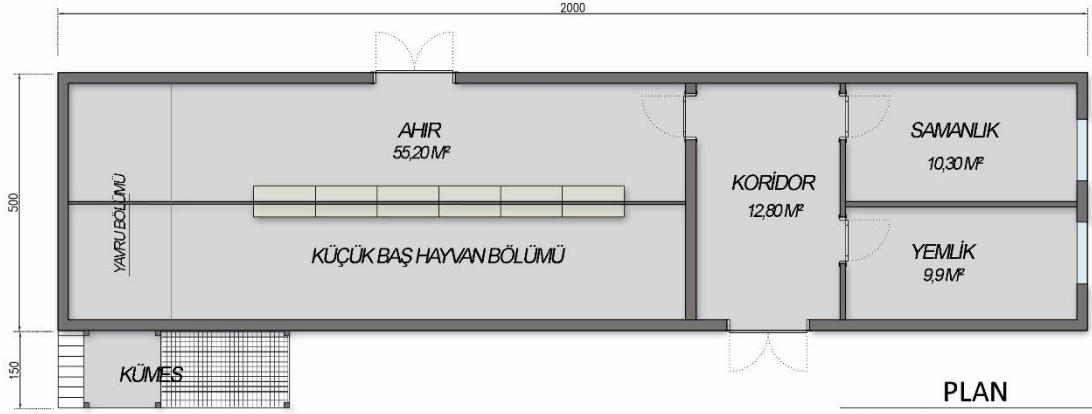


HOUSE BRUT	128 m <sup>2</sup>
DAM	58 m <sup>2</sup>
STAIRS	4 m <sup>2</sup>
TOTAL	190 m <sup>2</sup>
COURTYARD	40 m <sup>2</sup>



# BARN / TYPE 1

## SEETLEMENT PLAN FOR 20 SHEEPS BARN

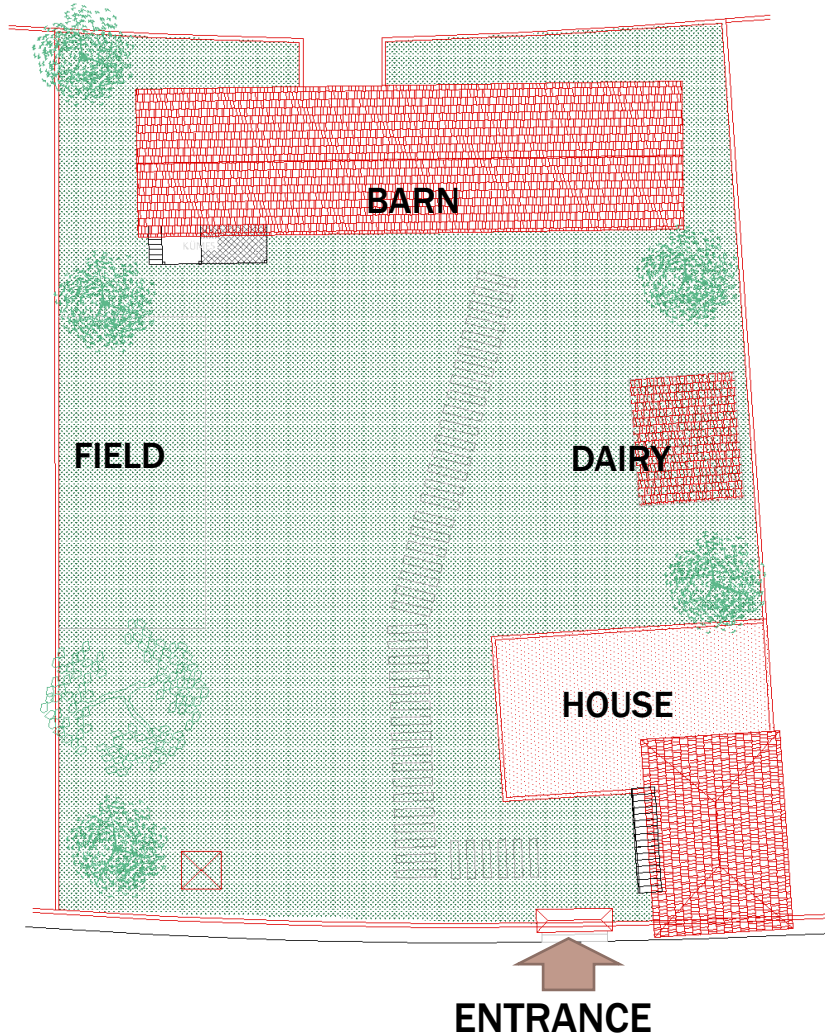


PLAN  
20 Küçük Baş Hayvan - 100m<sup>2</sup>



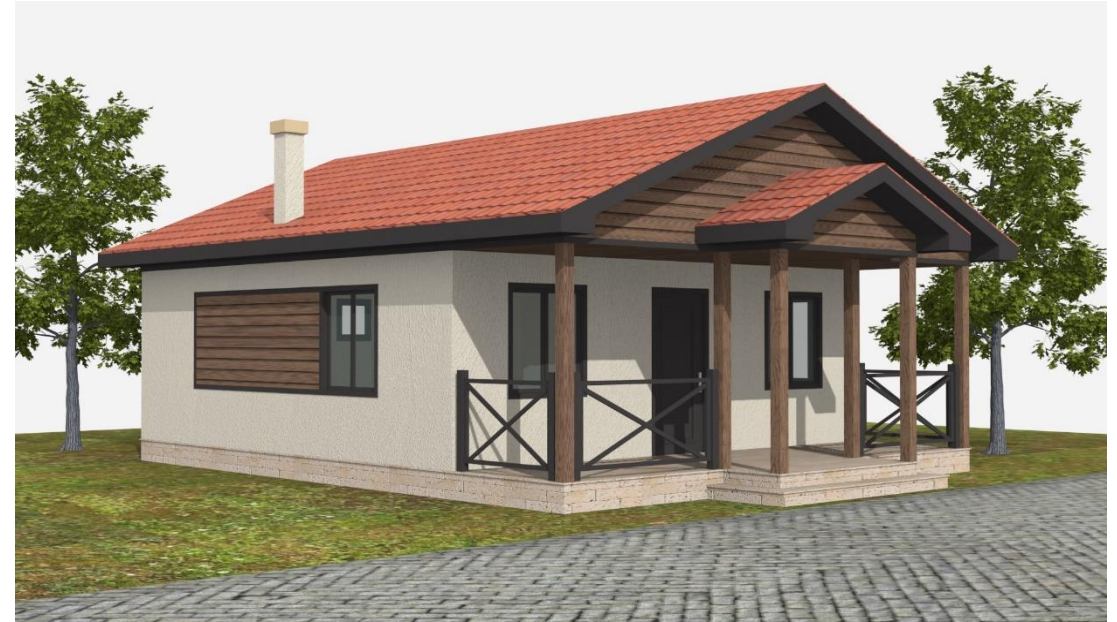
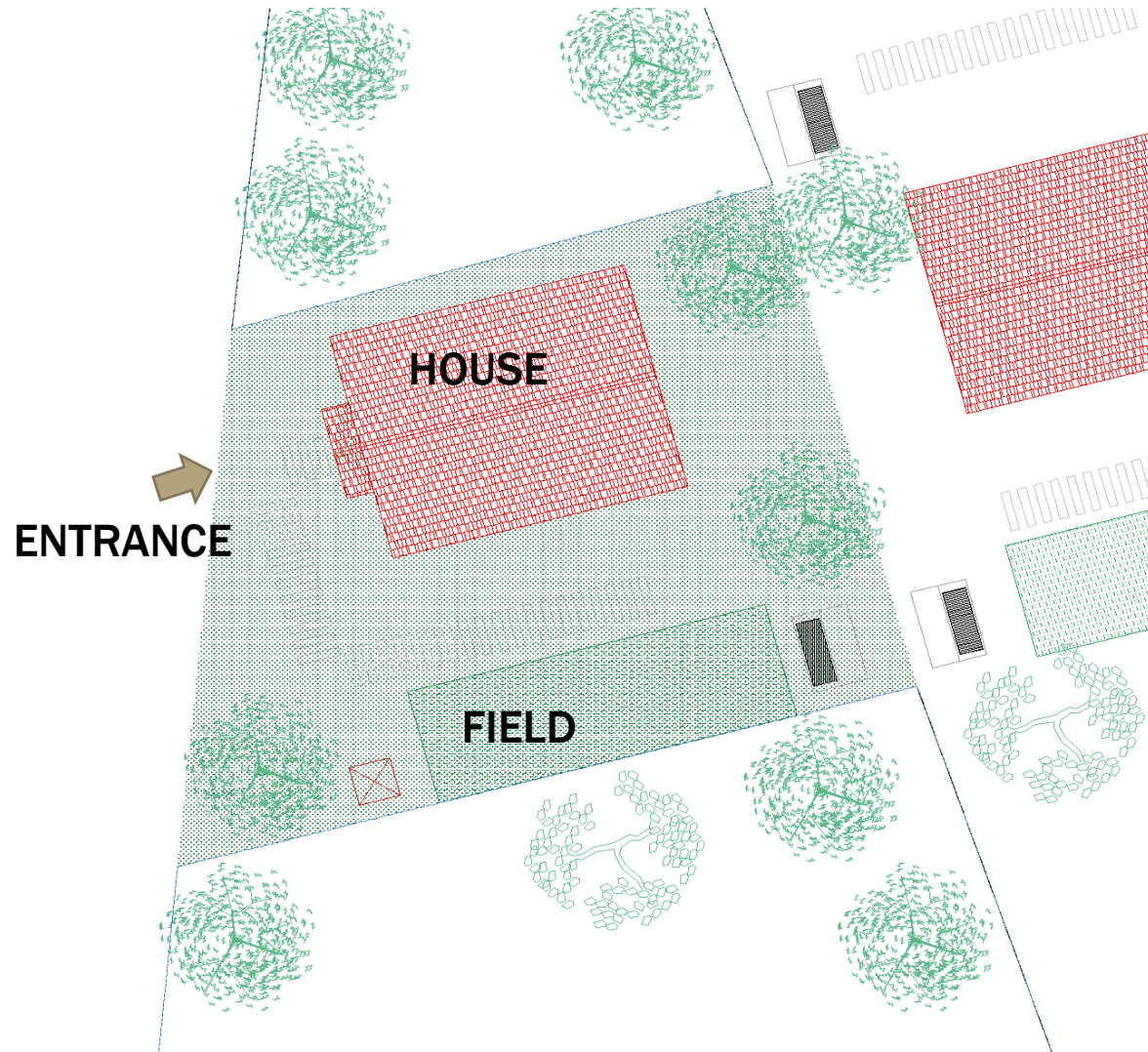
# EXAMPLE SETTLEMENT PLAN

BARN for 20 SHEEPS + DAIRY + HOUSE PLAN



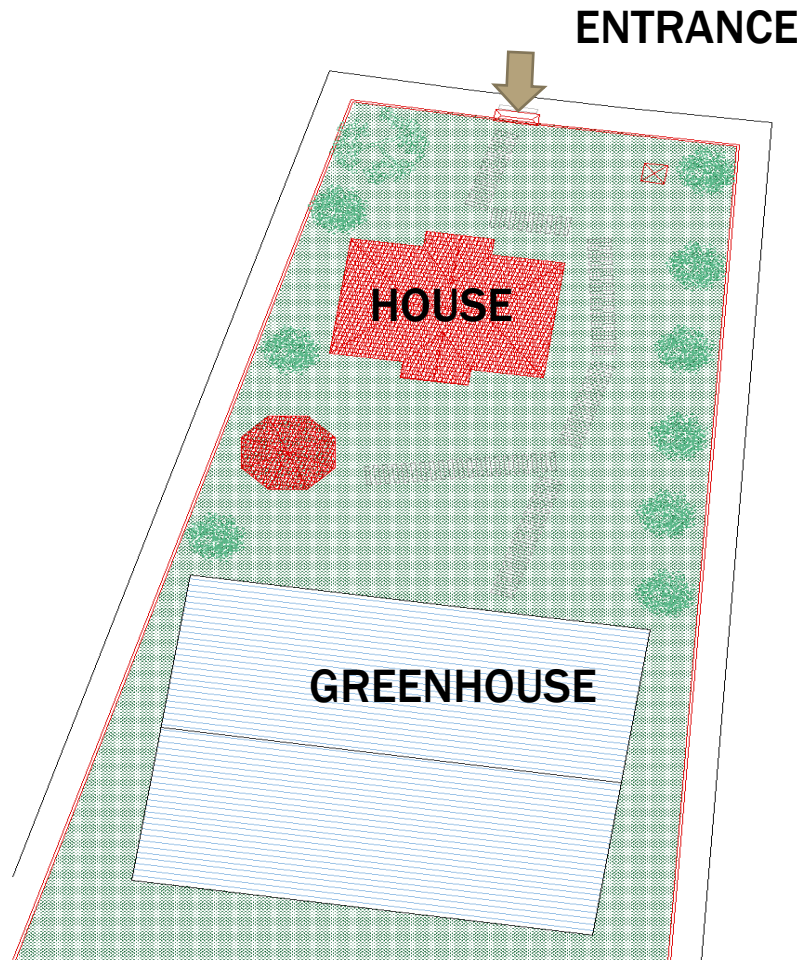
# EXAMPLE SETTLEMENT PLAN

## VILLAGE HOUSE SETTLEMENT PLAN



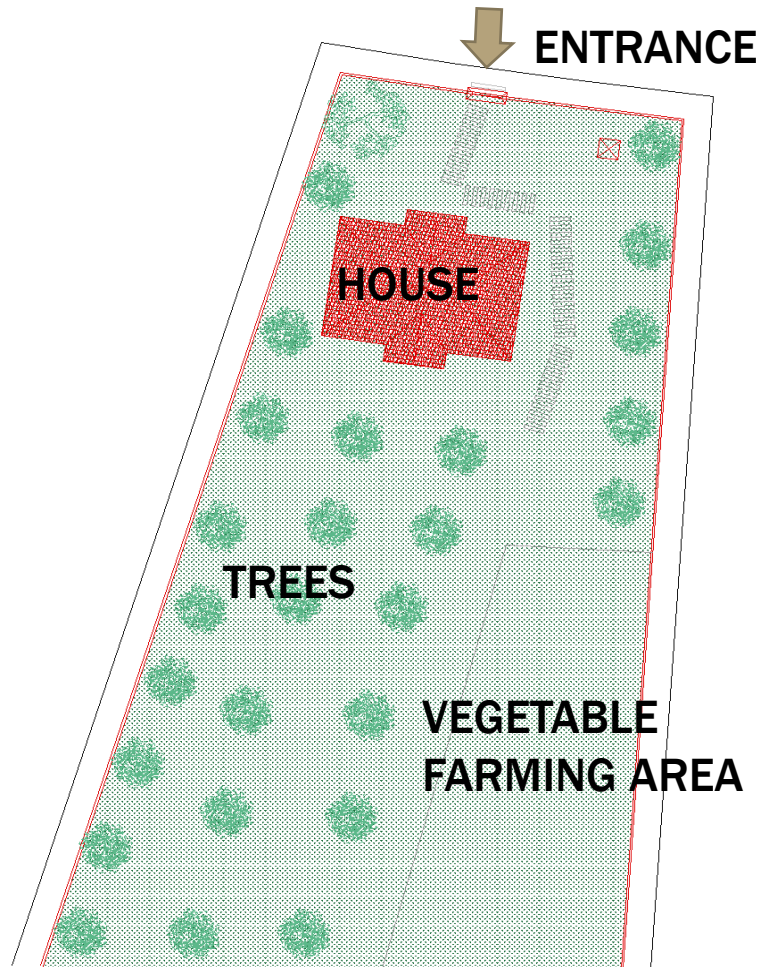
# EXAMPLE SETTLEMENT PLAN

## GREENHOUSE + HOUSE SETTLEMENT PLAN



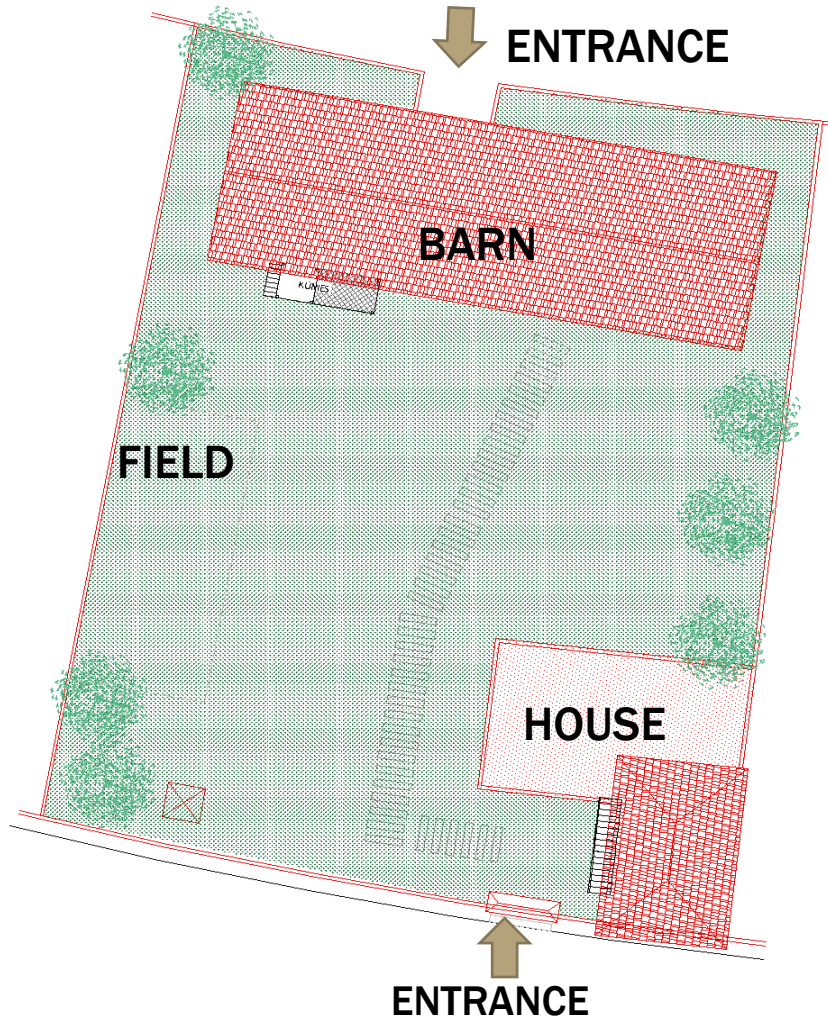
# EXAMPLE SETTLEMENT PLAN

## OPEN AREA FARMING / HOUSE SETTLEMENT PLAN

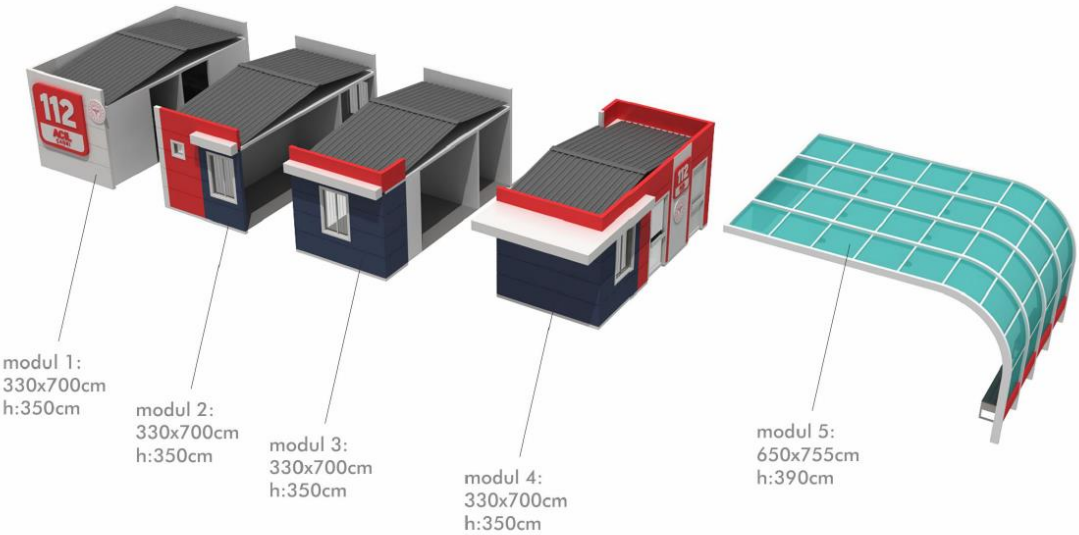
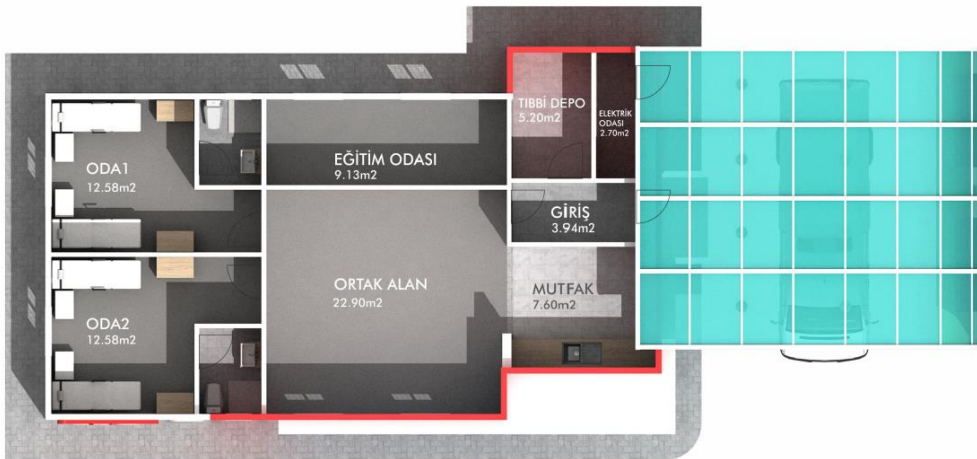


# EXAMPLE SETTLEMENT PLAN

## BARN FOR 20 COW + HOUSE SETTLEMENT PLAN



# CONCEPT PROJECT – EMERGENCY AID CENTERS



# MOCAMP - MODULAR CAMPS



## A hybrid solution for sheltering

- Setup: 20 minutes with 2 people without any tool or machine
- Surface: any type, not required a flat surface
- Area: 24 m<sup>2</sup>
- Weight: 120 kg
- Covering: Textile, composite
- Transportation: with trolleys

# TINY HOUSE CONCEPTS (SELF SUFFICIENT ENERGY&AND WATER)



# BALLISTIC UNIT





**TENT**

# TENT

- DISASTER TENT
- PAVILION TENT
- INFLATABLE TENT
  - ACİL MÜDAHALE ÇADIRI - EMERGENCY TENT
  - ETKİNLİK ÇADIRI - EVENT TENT
- GENERAL PURPOSE TENT
- SHELTER TENT
- MILITARY TENT
- KAM PET

# PAVILION TENT

**3\*3 m<sup>2</sup> - 4\*4 m<sup>2</sup> - 5\*5 m<sup>2</sup> - 6\*6 m<sup>2</sup>**



## SIMPLE SETUP

It may be used in the outdoor activities such as shade, camellia, ceremonial tent office. Fair, occasion stand, etc. It has characteristics of easy carriage, storage and simple setup, ability to use the side curtains open and closed.



## WATERPROOF

Ceiling and side curtains; the waning having 435gr/m<sup>2</sup> PVC waterproof (TS 1974 EN 1734) and flame-resistance (TS EN ISO 6941) characteristics is used.

## FIREPROOF

In ceiling; the awning heat-resistant having 670gr/m<sup>2</sup> PVC water proof (TS 1974 EN 1734) and flameproof (TS EN ISO 6941) characteristics, also heat-resistant between -30 and +70 temperatures is used.

## DURABLE

The carrier system consists of anodized aluminum 6063 pipes, the fittings are made of aluminum Aisi 12 alloy cast and the tent fixing process is made with 4 tent pegs of 20 and 400 mm in length from guy legs. There is 1 window of 2,6 \* 1,3 cm on the side panels. For windows (0,50 mm 620gr/m<sup>2</sup>) transparent striped acetate is used.



# INFLATABLE TENT

**18 m<sup>2</sup> - 24 m<sup>2</sup> - 37,5 m<sup>2</sup> - 56 m<sup>2</sup> - 76 m<sup>2</sup>**



## SIMPLE SETUP

It is designed in conformity with usage for the aims such as office, bureau, school, dining hall health tent etc. it has characteristics of easy carriage, storage, simple setup; very fast swelling with the available compressor (for example 56 m<sup>2</sup> air channel tent to setup in 4,5 minutes).



## FIREPROOF

In the air channel; the awning 1050 gr/m<sup>2</sup> best durable between -30 and +70 temperatures in the air channel and special protected against blight and UV is used, in the tent's body; the awning 430 gr/m<sup>2</sup> protected against light and UV and PVC is used. In case it is demanded, 100% cotton having flame-resistant (TS EN ISO 6941) characteristic is used in the interlining.



## WATERPROOF

In the base the awning 670 gr/m<sup>2</sup> PVC waterproof (TS 1974 EN 1734) is used.

## DURABLE

The accessories; repair kit electrical swelling pump, hose valves, hammer and stakes. The load-bearing system are obtained by using the special chemical adhesives and adhering of 1050 gr/m<sup>2</sup> PVC awning pipes with the high frequency machine. The windows differ according to the tent's dimension, there are the zippered doors those may be opened completely from the front (one piece) and the rear (one piece) and sideward.



# EMERGENCY TENT

**18 m<sup>2</sup> - 24 m<sup>2</sup> - 37,5 m<sup>2</sup> - 56 m<sup>2</sup> - 76 m<sup>2</sup>**



## SIMPLE SETUP

It is designed in conformity with usage for the aims such as office, bureau, school, dining hall health tent etc. It has characteristics of easy carriage, storage, simple setup; very fast swelling with the available compressor (for example 76 m<sup>2</sup> Emergency Tent Is setup In 9-10 minutes).



## FIREPROOF

In the air channel; the awning 1050 gr/m<sup>2</sup> best durable between -30 and +70 temperatures in the air channel and special protected against blight and UV is used, in the tent's body; the awning 430 gr/m<sup>2</sup> protected against isght and UV and PVC is used. In case it is demanded, 100% cotton having flame-resistant (TS EN ISO 6941) characteristic is used in the interlining.



## WATERPROOF

In the base the awning 670 gr/m<sup>2</sup> PVC waterproof (TS 1974 EN 1734) is used.

## DURABLE

The accessories; repair kit electrical swelling pump, hose valves, hammer and stakes. The load-bearing system are obtained by using the special chemical adhesives and adhering of 1050 gr/m<sup>2</sup> PVC awning pipes with the high frequency machine. The windows differ according to the tent's dimension, there are the zippered doors those may be opened completely from the front (one piece) and the rear (one piece) and sideward.



# EVENT TENT



## SIMPLE SETUP

The usage aim is designed in conformity with usage for activity, fair, shade. It has characteristics of easy carriage; storage, simple setup; very fast swelling with the available compressor. The productions may be made in the demanded sizes.



## FIREPROOF

In the air channel; 1050 gr/m<sup>2</sup> PVC awning heat-protected for -30 and +70 temperatures special protected against blight and UV, In the tent's body; 550 gr/m<sup>2</sup> PVC and awning special protected against blight and UV.

## DURABLE

The load-bearing system and horizontal beams are obtained by using the special chemical adhesives and adhering of 1050gr/m<sup>2</sup> PVC awning pipes with the high frequency machine. It is available for usage open on all sides. Accessories; repair kit electrical swelling pump, hose valve; hammer and stakes.



# GENERAL PURPOSE TENT

45 m<sup>2</sup> - 63 m<sup>2</sup> - 105 m<sup>2</sup> - 210 m<sup>2</sup>



## SIMPLE SETUP

Usage Areas: It is designed in conformity with usage for the aims such as school warehouse, working area, life area, Office, dining hall, accommodation tent etc.



## FIREPROOF

In the tent there is an awning heat resistant against -30 and +70 temperatures flame resistance (TS EN ISO 6941) characteristics. The load - bearing system consists of the horizontal beams and frame manufactured of the galvanized (ST52) pipes.

## WATERPROOF

In the base the awning 670 gr/m<sup>2</sup> PVC waterproof (TS 1974 EN 1734) tarpaulin is used.

## DURABLE

There is a zippered door on both sides. There are the chimney holes designed for heating on the side walls of the entrance door. The wished heating system may be setup.



# SHELTER TENT

23 m<sup>2</sup>



## SIMPLE SETUP

Usage Areas: It is designed to use natural and man-made disasters. It has the features of high mobility, storable and easy setup.



## FIREPROOF

A tarp with 435 gr/m<sup>2</sup> PVC waterproof (TS 1974 EN 1734) and fire retardant (TS EN ISO 6941) features are used.



## WATERPROOF

There is a lobby between the outer tent and the inner lining to ensure air circulation and thermal insulation. A tarp with 435 gr/m<sup>2</sup> waterproof (TS 1974 EN 1734) and fire retardant (TS EN ISO 6941) features are used.



## DURABLE

100% cotton tarp with 520 gr/m<sup>2</sup> (TS EN ISO 811i) features are used. There are two 3.5 m<sup>2</sup> entrance areas in the tent.



# MILITARY TENT

9 m<sup>2</sup> - 16 m<sup>2</sup>



## SIMPLE SETUP



Usage Areas: it is designed in order to be used in the military camp, war, military exercises areas.



## FIREPROOF

100% cotton awning having characteristics of water proofing (TS 257 EN 20811) and flame resistance (February 2017 TS EN ISO 6941 process B) weight of 520 gr/m<sup>2</sup> is used in the ceiling, the side walls, fringes and door.



## WATERPROOF

The awning having characteristics of 435 gr/m<sup>2</sup> PVC water proof (TS 1974 EN 1734) and flame resistance (TS EN ISO 6941 process B) is used in the Rain Shield. the Tent's Saddle Bag and Bottoms. There are 4 pieces of the Interior covered windows having 40x60 dimensions on sides. The PVC rain shield offered as portable is designed in order to be used in the possible intensive precipitations.

## DURABLE

100% cotton gray cloth is used in the interior part ceiling in order to provide its insulation. The polyethylene awning having weight of 150 gr/m<sup>2</sup> is used in order to be spread out onto the tent's ground. As there is a zippered door with double handles, having height of 200 cm in the front and rear parts of tent the door in the front part is designed for the normal entrance and exit, the door in the rear part is designed for emergency exit. There is an adjustable interior coat hanger in tent. The load-bearing system and horizontal beams consist of the dull white eloxal aluminium ETIAL-60 pipes of T6 ø42x2 mm.



# THANK YOU



## SMART KEY TURKEY

The ownership is LLC (Limited Liability Company)

**Smart Key Turkey İnşaat Taahhüt Otomotiv Turizm  
Hizmetleri Sanayi ve Dış Ticaret Limited Şirketi**

**Office :** Vetro City Residence, E5 Uzeri, No: 226

Beylikdüzü, Istanbul-Turkey

### **Contact:**

**+90- 505 088 7188**

**+90-532 347 0426**

E-mail: [info@smartkeyturkey.com](mailto:info@smartkeyturkey.com)